

PACIFIC NEUROSCIENCE INSTITUTE LAUNCHES NEW PSYCHEDELIC-ASSISTED CLINICAL TRIAL

Nature-themed visual experience and psilocybin therapy are used for the treatment of alcohol use disorder.

Pacific Neuroscience Institute (PNI) has launched its first psychedelic-assisted clinical trial and begun participant enrollment.

[Read More](#)



TREATING THE EFFECTS OF CANCER ON MIND AND SPIRIT DR. SHANTHI GOWRINATHAN

Treating cancer involves more than treating the body. The disease takes a toll on the mind, too, no matter what organ system it affects.

[Listen Now](#)

Subscribe:
[Google Podcasts](#) | [Apple Podcasts](#)
 | [Spotify](#) | [Simplecast](#) | [YouTube](#)



MULTIPLE SCLEROSIS + COVID-19 VACCINES

When the COVID-19 pandemic first emerged, there were many questions about how persons with Multiple Sclerosis (MS) would be affected.

Now a year later, we have answers to some of those questions, and other issues that have yet to be well defined.

[Learn More](#)

PACIFIC NEUROSCIENCE INSTITUTE®



CONTENTS

- ▶ [PACIFIC NEUROSCIENCE INSTITUTE LAUNCHES NEW PSYCHEDELIC-ASSISTED CLINICAL TRIAL](#)
- ▶ [TREATING THE EFFECTS OF CANCER ON MIND AND SPIRIT](#)
- ▶ [MULTIPLE SCLEROSIS + COVID-19 VACCINES](#)
- ▶ [WELCOMING A NEW PACIFIC NEUROSCIENCE INSTITUTE TEAM MEMBER](#)
- ▶ [PNI 2020 YEAR IN REVIEW](#)
- ▶ [SOUTH BAY STORY](#)
- ▶ [EVENT: FACIAL NERVE WEBINAR](#)
- ▶ [EVENT: PITUITARY SUPPORT GROUP](#)

LOCATIONS

- ▶ **PNI-Santa Monica | 310-582-7640**
 2125 Arizona Ave
 Santa Monica, CA 90404
- ▶ [1301 20th St](#)
 Santa Monica, CA 90404
- ▶ **PNI-Wilshire | 310-477-5558**
 11645 Wilshire Blvd, #600
 Los Angeles, CA 90025
- ▶ **PNI-South Bay | 424-212-5361**
 5215 Torrance Blvd, #300
 Torrance, CA 90503
- ▶ [4201 Torrance Blvd, #520](#)
 Torrance, CA 90503



Accepting new patients for virtual and clinic consultations



WELCOMING A NEW PACIFIC NEUROSCIENCE INSTITUTE TEAM MEMBER

Melanie Lampa is the Director of Research Administration and Operations at PNI Foundation. She oversees research operations for the Brain Health Center.

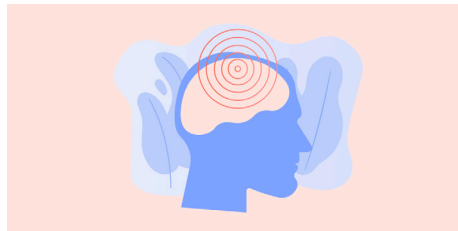
[Learn More](#)



PNI 2020 YEAR IN REVIEW

2020 was, despite the pandemic, a strong year for clinical care delivered by PNI providers with multiple milestones being achieved.

[Learn More](#)



SOUTH BAY STORY

South Bay man survives a life-threatening brain aneurysm thanks to a rapid medical response at Providence Little Company Medical Center in Torrance, California.

[Learn More](#)

EVENTS

FACIAL NERVE WEBINAR
Thursday, April 8, 2021
 9 am PST

[Learn More](#)

PITUITARY SUPPORT GROUP
Saturday, April 10, 2021
 9 am to 11 am

[Learn More](#)

PNI RESOURCES AT YOUR FINGERTIPS



VIDEO LIBRARY

With over a hundred videos, you can learn about our doctors, programs, conditions we treat, and even how to perform surgical procedures!

[More Info](#)



CARE TEAMS

Expertise, collaboration, and innovation are essential in providing the best possible care today while advancing novel treatments for tomorrow.

[More Info](#)



SUPPORT GROUPS

A major mission of the Pacific Neuroscience Institute is to provide education, support, and empowerment for those dealing with neurological challenges.

[More Info](#)



CENTERS OF EXCELLENCE

The **Pacific Neuroscience Institute** proudly houses 10 specialized neuro centers with expertise that spans the clinical neuroscience landscape.

[More Info](#)



BLOG

Check out our blog for informative insights on brain acuity, staying healthy during troublesome times, & more!

[More Info](#)



PODCASTS

Tune in for weekly Podcast Minis as well as cool in-depth conversations about the brain each month.

[More Info](#)