

# 2021 IN REVIEW & LOOKING FORWARD IN 2022

PACIFIC  
NEUROSCIENCE  
INSTITUTE®



Ranked in  
the top 50  
Neurology &  
Neurosurgery  
programs in  
the nation





PUTTING YOUR

# BRAIN CARE

in the most capable hands



**RANKED IN THE NATION'S TOP 50** neurology and neurosurgery programs, **PACIFIC NEUROSCIENCE INSTITUTE** experts specialize in minimally invasive, maximally effective treatments focused on quality of life.

Throughout their treatment journey, patients experience compassionate, multispecialty care at Saint John's Health Center, Santa Monica, and Little Company of Mary, Torrance.

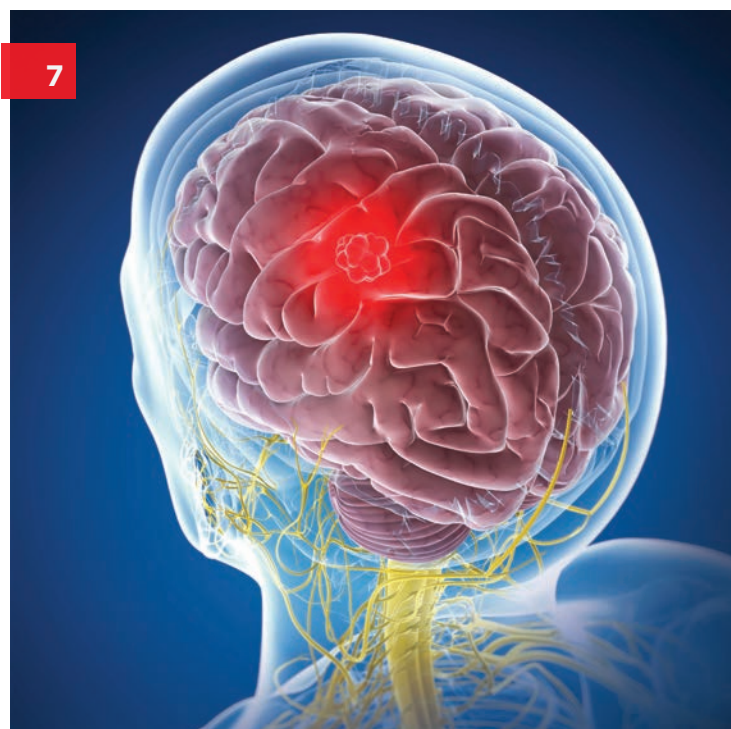
**THINK NEURO. THINK PNI.**

Santa Monica 310-582-7640 | South Bay 424-212-5361  
**PACIFICNEURO.ORG**

**PACIFIC  
NEUROSCIENCE  
INSTITUTE®**

## CONTENTS

- 4** Pacific Neuroscience Institute
- 5** Founder's Letter
- 6** PNI By The Numbers
- 7** Neuroscience Clinical Care
- 9** Locations
- 10** Clinical Trials, Research & Publications
- 12** Training & CME
- 14** Patient & Community Education
- 16** PNI Foundation
- 17** PNIF Board & Advisory Committee
- 18** PNI Physicians



## Editorial Team

Founder & Director, Pacific Neuroscience Institute  
**Daniel Kelly, MD**

Vice President, PNI Foundation  
**Melissa Coleman, Esq**

Director, Marketing & Communications  
**Zara Jethani, MS, MBA**



## PNI CENTERS OF EXCELLENCE

- ▶ Brain Health
- ▶ Brain Tumor
- ▶ Eye, Ear & Skull Base
- ▶ Facial Pain
- ▶ Hydrocephalus
- ▶ Movement Disorders
- ▶ Pituitary Disorders
- ▶ Spine Health
- ▶ Stroke & Neurovascular
- ▶ Neuroscience Research & Clinical Trials

### Pacific Neuroscience Institute®

Pacific Neuroscience Institute® (PNI®) comprises the PNI Medical Group (PNIMG) and the PNI Foundation (PNIF).

PNI Medical Group includes 35 providers who provide high level patient care and is affiliated with Providence Saint John's Health Center, Santa Monica, and Providence Little Company of Mary Medical Center, Torrance, CA. In addition, PNIMG physicians see patients across seven Southern California hospitals, through the Neuro-oncology program at Pacific Brain Tumor Center, and the Stroke & Neurovascular Center.

PNI Foundation, a 501 (c)(3) organization, was created to:

- Promote neuroscience clinical programs that optimize brain health and quality of life.
- Support advances in research through novel treatment scientific exploration and approaches.
- Train the next generation of neuroscientists and clinicians.
- Educate patients and the community at large on vital neuroscience issues.



## Message from the Founders

**W**elcome to 2022!

Despite another year passing in the shadow of COVID-19, PNI continues to exert a positive impact in the world of neuroscience through excellence in clinical care, research, and education. Last year, PNI's expertise in neurological care resulted in Providence Saint John's Health Center, our home base, being ranked in the top 50 hospitals for neurology and neurosurgery programs in the United States by US News & World Report. We are extremely proud and honored to be counted among the best neuroscience programs in the United States from among 5000 hospitals. To obtain this accolade within such a short span of PNI's launch in 2015 speaks to the expertise and dedication of all our providers.

Philanthropy enables us to develop research and clinical programs. Expanded access to high-quality innovative care for the prevention, diagnosis, and treatment of disorders of the brain, skull base and spine are possible because of your support. Our donor community continues to grow and be a cornerstone in PNI's ongoing ability to make a difference for patients and their families. We thank you.

Here are HIGHLIGHTS of our accomplishments in 2021 and a look forward to what's coming up in 2022.

**THINK NEURO. THINK PNI.**



*Sincerely,*

**Daniel Kelly, MD**

PNI Director & Neurosurgeon

**Chester Griffiths, MD, FACS**


Otolaryngologist & Facial Plastics

**Howard Krauss, MD**

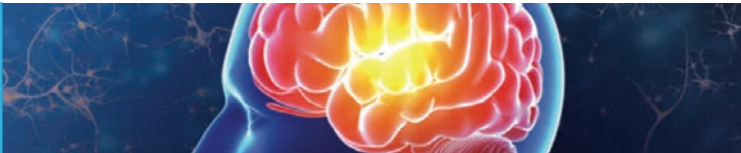
Surgical Neuro-ophthalmology

**Santosh Kesari, MD, PhD**

Neuro-oncology & Neurosciences


PACIFIC NEUROSCIENCE INSTITUTE		
 <b>10</b> Centers of Excellence	<b>35</b> Medical Group Faculty	<b>16</b> Affiliated Faculty
	<b>146</b> Total Staff (Providence, PNIMG & PNIF)	<b>20</b> Advanced Practice Providers
	<b>14</b> Clinic Locations	<b>7</b> Hospital Affiliates

NEUROSCIENCE CLINICAL CARE	CLINICAL TRIALS & RESEARCH
<b>2399</b> Medical Group Surgical Procedures (1466 Neuro + Ophtho + ENT / 933 NIR + Neurovascular)	<b>38</b> Clinical Trials & Expanded Protocols
<b>68,382</b> Clinic Visits (59,773 in-person / 8609 virtual)	<b>126</b> Patients Enrolled & Consented
	<b>50</b> Peer-reviewed Publications
	<b>2</b> Grants

TRAINING & CONTINUING MEDICAL EDUCATION	 <b>56</b> CME (2 nursing symposia, 1 brain health, 1 movement disorders, 52 weekly tumor board)
<b>12</b> Grand Rounds	
<b>32</b> Neuroanatomy Formal Dissections	
<b>9</b> Neuroscience Interns (Undergraduate & Graduate)	
<b>17</b> Medical Assistants-In-Training	

PATIENT & COMMUNITY OUTREACH					
<b>88</b> Support Group Sessions	<b>8</b> Community Events	<b>13</b> Newsletter Issues	<b>52</b> Podcast Episodes	<b>232</b> Media Mentions	<b>83</b> Blogs
<b>5</b> Social Channels (LI, Fb, Insta, Tw, Pin)	<b>8441</b> Social Media Followers	<b>1120</b> Social Posts	<b>339</b> YouTube Videos	<b>24K</b> YouTube Followers	<b>1M</b> Website Users

**134**
Donors



WE THANK ALL OUR DONORS FOR THEIR GENEROUS SUPPORT

## In the Pursuit of Excellence NEUROSCIENCE CLINICAL CARE

### ► PNI thrives and receives notable recognitions

In 2021, PNI's overall clinic volumes in Santa Monica and Torrance continued to rise. PNI and Saint John's Health Center were recognized by US News & World Report for our Neurology & Neurosurgery program ranking #48 in the nation. Our Providence affiliates ranked as Best Regional Hospitals in California. Our footprint expanded to 14 specialty clinic locations and seven hospital affiliates.

### ► Brain tumors, pituitary disorders, and more

For the second year in a row, PNI was selected as a North American Skull Base Society Multidisciplinary Team of Distinction for 2021. Our neurosurgery capability expanded to include Saint Joseph Medical Center in Burbank and Holy Cross Medical Center in Mission Hills. The Pacific Brain Tumor Center at PNI was designated as a Comprehensive Brain Tumor Center within the Providence regional network of hospitals with Saint John's Health Center, Little Company of Mary Medical Center serving as brain tumor regional referral centers. PNI neurosurgeons continued to lead the Providence SoCal system at Saint John's Health Center with the highest brain tumor volumes, lowest ICU usage, shortest length of stay and highest rate of discharge to home. The neuro-oncology team, palliative medicine specialist, and the supportive care clinic saw a steady increase in patients.

**DIRECTORS:** Daniel Kelly, MD, Santosh Kesari, MD, PhD, & Garni Barkhoudarian, MD

### ► Stroke & Neurovascular excellence

PNI's stroke experts and partner hospitals (Saint John's & Little Company of Mary) earned the Get With The Guidelines® – Stroke Gold Plus Quality Achievement Award and Target: Stroke Elite Plus Honor Roll. The stroke & neurovascular team treated over 900 stroke and neurovascular patients across Southern California, the largest collective volume in all Southern California. PNI's neuro-interventional radiologists work across Southern California Providence affiliate stroke centers (Saint John's Health Center, Little Company of Mary



Medical Center, Holy Cross Medical Center, Saint Joseph Medical Center).

**DIRECTOR:** Jason Tarpley, MD, PhD

### ► Eye, ENT, and Head & Neck programs grow

Our ENT, and head & neck colleagues began seeing patients in the South Bay and Playa Vista in addition to the well-established PNI-Santa Monica (two locations) and PNI-Wilshire clinics. Services included general ENT, head & neck oncology, facial reconstruction, facial plastic surgery, and neuro-otology. 2021 saw PNI's first facial reanimation surgery, and the launch of the new Head & Neck Cancer surgery program. Our new cochlear implant program was initiated and will be the first of its kind in the area. PacificHeadAndNeck.com launched.

**DIRECTORS:** Chester Griffiths, MD, FACS & Howard Krauss, MD





### ► Brain health expands

The Brain Health Center team continued to provide essential mental health care for patients with dementia, memory loss and other cognitive impairments, with clinic volumes holding steady in 2021. Safety is our top priority, and the brain health center was able to provide high quality care through virtual visits to over 50 percent of their patients. Our multiple sclerosis and psycho-oncology (cancer psychiatry) programs provided much needed care and support. Our psychedelic-assisted ketamine program continued to expand as an effective treatment for patients with mental anguish and addiction.

DIRECTOR: David Merrill, MD, PhD

### ► Movement disorders gathers more steam

The Movement Disorders team had a great year and saw more patients in both Santa Monica and Torrance. A new implantable deep brain stimulation (DBS) device Medtronic Percept PC® for movement disorders was introduced into clinical practice. PNI-South Bay was the first site to use Medtronic Sensight® segmented leads for DBS in Southern California. A pathway for faster recovery after DBS was implemented. A new movement disorders nurse joined the Providence Little company of Mary clinic to expand the clinical and research programs.

DIRECTORS: Melita Petrossian, MD & Jean-Philippe Langevin, MD



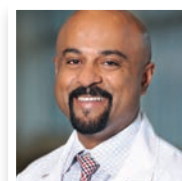
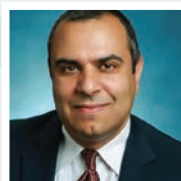
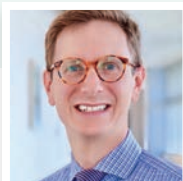
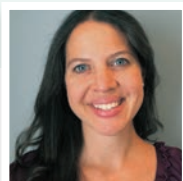
## 2021 Faculty Highlights

PNI welcomed neuroscience experts:

Dr. Kirsty Bortnick - clinical neuropsychologist  
 Dr. Benjamin Pulli - stroke & neurovascular disease  
 Dr. Nouzhan Sehati - neurosurgery  
 Dr. Courtney Voelker - cochlear implant surgery  
 Dr. Evan Walgama - head & neck cancer surgery

Dr. Santosh Kesari was named regional medical director of Providence Southern California's Research Clinical Institute.

Many of our faculty received Super Doctor, Top Doctor, Best Doctor, and Patients' Choice awards.



## In 2022...

- We will grow our programs with new providers in geriatric psychiatry, neuro-ophthalmology, ENT, neuro-interventional radiology, neuro-oncology, and endocrinology.
- The cochlear implant program will be established to treat adults and children.
- A brain health lifestyle program is in the works for executives and professionals who wish to remain at the top of their game. Launch is estimated for late Summer 2022.
- As we continue to build the neuro-oncology team, we plan to expand patient access into Providence Mission Hills and other ministries in LA and Orange Counties.
- Enhanced Recovery after Surgery (ERAS®) pathways for patients will continue to be implemented across our clinics.





## PNI Clinic Locations

### ▶ PNI - Santa Monica

- 2125 Arizona Ave, Santa Monica, CA 90404
- 1301 20th St, Santa Monica, CA 90404
- 2121 Santa Monica Blvd, CA 90404

### ▶ PNI - Wilshire

- 11645 Wilshire Blvd, #600, Los Angeles, CA 90025

### ▶ PNI - South Bay

- 5215 Torrance Blvd, #300, Torrance, CA 90503
- 4201 Torrance Blvd, #520, Torrance, CA 90503

### ▶ Mission Hills

- 11550 Indian Hills Rd, #261, Mission Hills, CA 91345

### ▶ Burbank

- 501 S. Buena Vista Ave, Burbank, CA 91505
- 181 S. Buena Vista Ave, Burbank, CA 91505

### ▶ Playa Vista

- 12555 West Jefferson Blvd, Los Angeles, CA 90066

### ▶ Newport Beach

- ATP Building 47, Newport Beach, CA 92663

### ▶ Fullerton

- 2151 N. Harbor Blvd, Fullerton, CA 92835

### ▶ Orange

- 1000 W La Veta Ave, Floor 1, Orange, CA 92868

### ▶ Mission Viejo

- 27700 Medical Center Rd, Mission Viejo, CA 92691

## Hospital Affiliates

### Providence Saint John's Health Center

2121 Santa Monica Blvd, Santa Monica, CA 90404

### Providence Little Company of Mary Medical Center

4101 Torrance Blvd, Torrance, CA 90503

### Providence Saint Joseph Medical Center

501 S Buena Vista St, Burbank, CA 91505

### Providence Holy Cross Medical Center

15031 Rinaldi St, Mission Hills, CA 91345

### Providence Saint Jude Medical Center

2151 N. Harbor Blvd, #3100, Fullerton, CA 92835

### Providence Saint Joseph Hospital

1000 W. La Veta Ave, Orange, CA 92868

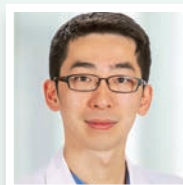
### Providence Mission Hospital Mission Viejo

27700 Medical Center Rd, Mission Viejo, CA 92691



*"Dr. Wagle is treating my husband for brain cancer. If I didn't believe he has the education and experience with brain cancer he would not be treating my husband. He works with a team of PAs... They are fantastic and very professional."*

*Patient Review, Healthgrades*



*"Dr. Guan is a very caring physician. He thoroughly explained my spine procedure. He has a great bedside manner and put my mind at ease. I definitely was in extremely capable hands. I highly recommend Dr. Guan to everyone who is considering spine surgery. Thank you!"*

*Michelle W., Healthgrades*



*"Dr. Iyer is second to none! One of the best Neurosurgeons. My father suffered a stroke and Dr. Iyer saved his life in an extremely short time frame which significantly improved his chances of recovery given the blood clot causing the stroke was removed so rapidly. Dr. Iyer is compassionate, knowledgeable, and caring apart from being extremely skilled at what he does. Dr. Iyer also takes the time to follow up and ensure things are going as planned during recovery and is there to help. I cannot be more grateful for Dr. Iyer, and recommend him to the highest degree."*

*Patient Review, Healthgrades*

## CLINICAL TRIALS, RESEARCH & PUBLICATIONS

The clinical trials program continued to grow in 2021 offering 38 trial options to patients in several areas including brain tumors, pituitary disorders, movement disorders, stroke, Alzheimer's disease, addiction and major depression.

### ► Neuro-oncology and other studies

The majority of our clinical trials address neuro-oncology interventions. 18 clinical studies ran for neurological tumors including high grade gliomas and glioblastomas, chordomas, meningiomas, solid tumors, and brain metastases. 11 trials focused on other difficult disease types, outcomes, and procedures.

### ► Movement disorders trials

Two clinical trials were initiated: Synuclein One for neurodegenerative disorders, and Praxis for essential tremor. An expanded access program for a novel treatment for multiple system atrophy completed. An FDA investigational device exemption for a brain-computer interface device from with Batelle was submitted.

### ► Stroke and neurovascular trials

Our stroke and neurovascular experts launched five new trials at Little Company of Mary addressing neuroprotection and other methodologies for stroke, carotid revascularization, and embolization.

## Publications

We continued raising the standard of care for difficult neurologic diseases through a total of 50 peer-reviewed publications.

- The pituitary disorders team widely distributed a collection of three key publications.
- PNI neurosurgical and otolaryngology surgical teams in collaboration with Providence Saint John's Health Center published a COVID-19 silver-lining paper showing that a streamlined care protocol for minimally invasive brain tumor surgery can lead to marked reductions in ICU use and hospital length-of-stay without compromising patient safety or quality outcomes.



[View our publications here](#)



Jason Tarpley MD PhD & Samuel Hou MD PhD

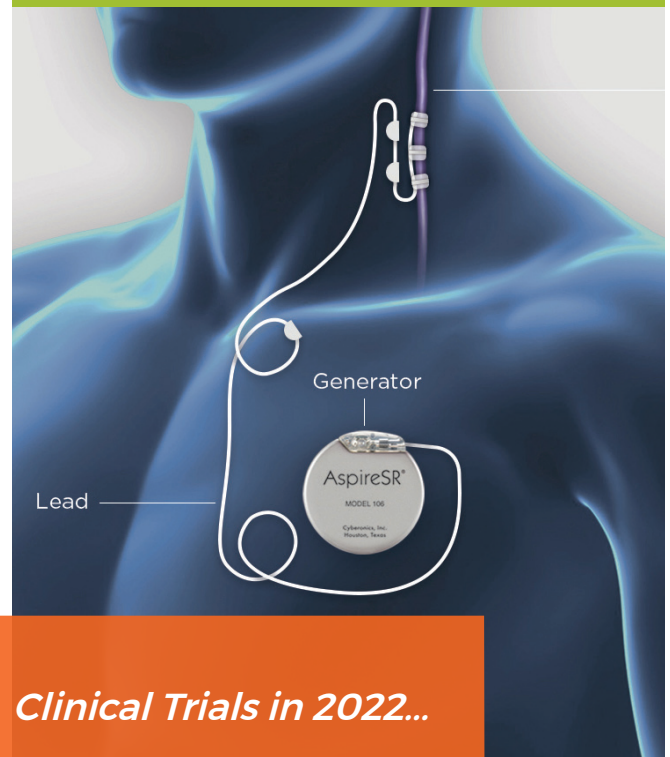


### ► Brain health research program

The brain health research team grew this year focusing on Alzheimer's disease and related conditions. Through philanthropy, the program blossomed in the four identified critical cores of clinical research, neuroimaging, neurogenomics & biomarkers, and operations & administration. Four trials were active: PREVENTION, mSIM, UCLA Women AD, and Stemedica. A fifth study, iPACES, was initiated.

### ► Tripping along

The Treatment & Research In Psychedelics (TRIP) program proved to be an important addition to our behavioral health services. In 2021, we expanded our team and launched two clinical trials of psychedelic-assisted therapy using psilocybin. The Phase 2 alcohol use disorder trial using Visual Healing® filled quickly and will complete in early 2022, and a multicenter trial for major depressive disorder sponsored by Usona Institute is currently recruiting patients.



- We will continue to recruit patients for current and anticipated brain tumor and related trials, while growing the clinical trial network across our Providence-partner hospitals.
- A surgical vagal nerve stimulation clinical trial with AspireSR® for depression sponsored by LivaNova will begin.
- A small pilot trial of wellness interventions will begin for those with newly diagnosed Multiple Sclerosis.
- We hope to expand our psychedelic clinical trials to conditions such as anxiety disorder, and prolonged grief for those who have lost loved ones to COVID-19, brain tumors and other types of cancer.
- Brain health research will grow in the areas of diagnosis, treatment, and clinical trials of patients with dementia and related cognitive, memory and mood disorders. We anticipate installing a high resolution 3T clinical research MRI for our patients and clinical trial participants. A new tablet-based gaming study, iPACES for memory and executive functioning in older adults with cognitive impairment will begin recruiting.
- Several manuscripts are currently in progress and will be published this year. Finally, several new grant applications will also be submitted.

## TRAINING & CONTINUING MEDICAL EDUCATION

- ▶ In 2021 we provided training and education opportunities for our 2021-22 clinical neurosurgical fellow, and nine neurosurgery research interns. The brain health center hosted a post-doctoral fellow.
- ▶ Our PNI experts were hosts to three courses and over 30 dissections at the state-of-the-art Neuroanatomical Surgical Skills Laboratory located at the Saint John's Cancer Institute. This advanced training facility has 12 stations for minimally invasive surgery, neuroanatomical dissections, and technology and approach advancements in keyhole surgery.
- ▶ PNI hosted an all-day virtual CME program that reviewed the current evidence for lifestyle strategies in optimizing brain health.
- ▶ Other CME courses included a continuing education program for elder care professionals, and two neuroscience nursing symposia – one virtual and one live - in its 12th year.
- ▶ Faculty presented grand rounds lectures at Providence Saint Joseph, Saint John's Cancer Institute, Harbor UCLA, and Little Company of Mary. The brain tumor board met weekly.
- ▶ Faculty attended and presented at virtual and live specialty forums on local, national, and international levels.
- ▶ The Medical Assistants-In-Training (MA-T) program of the Pacific Eye, Ear & Skull Base Center logged another successful year.

### Optimizing Brain Health | CME

#### Integrating Lifestyle Strategies into the Care of Neurologic Disease | November 13, 2021

Course Director | Melita Petrossian, MD, Director, Movement Disorders

Virtual Complimentary Course | 4.5 CME Hours

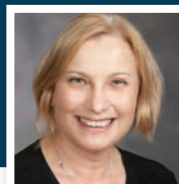
This course reviewed the current evidence for lifestyle strategies in optimizing brain health in the setting of Alzheimer's disease, other forms of dementia; Parkinson's disease; multiple sclerosis; balance and gait disorders; and anxiety, depression, addiction.

Taught by ten PNI specialists, clinical professionals learned about integrative strategies including diet, exercise, sleep hygiene, cognitive stimulation, social engagement, mindfulness/meditation, psychotherapy and new medication options including novel use of psychedelic-assisted therapies, as well as an update on deep brain stimulation and trans-magnetic neurostimulation.

*Attendees included Physicians and Advanced Practice Practitioners: Neurologists, family practitioners, internists, geriatricians, psychiatrists, addiction medicine specialists.*

*Non-physicians: Physical therapists, occupational therapists, speech therapists, dietitians, psychologists, social workers, acupuncturists.*

*Presenters: Melita Petrossian MD; Verna Porter MD; David Merrill MD PhD; Shanthy Gowrinathan MD; JP Langevin MD; Keith Heinzerling MD; Natalie Diaz MD; William Buxton MD; Barbara Giesser MD; Scott Kaiser, MD*



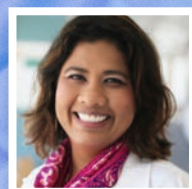
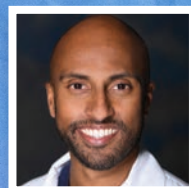
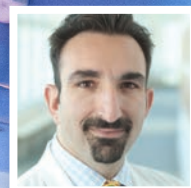




## *In 2022...*

- ▶ We will continue PNI Neuroscience Neurosurgical Clinical and Observational Fellowships and the Student Internship Program.
- ▶ An ENT CME event is scheduled for May.
- ▶ Grand Rounds will be hosted monthly at Little Company of Mary.
- ▶ PNI neuro-oncologists will be featured presenters in Seattle Science Foundation's educational video series.
- ▶ The 13th annual PNI Neuroscience Nursing Symposium will take place in Fall.

.....  
Garni Barkhoudarian MD; Walavan Sivakumar MD; Neil Martin MD;  
Christopher Putman MD; Amit Kochhar MD; Akanksha Sharma MD; Amy  
Eisenberg MSN ARNP CNRN; Sheila Moore MSG LCSW; Josh Emerson





## PATIENT & COMMUNITY EDUCATION



- ▶ In 2021, PNI experts participated as guests in virtual support groups, podcasts, interviews, and webinars addressing multiple sclerosis, palliative care, brain tumor, and brain health issues.



- ▶ Our pituitary patient support group, and monthly stroke patient, and stroke caregiver support groups met virtually.



- ▶ Educational events for patients living with Parkinson's disease (PD) included monthly virtual patient support groups, webinars, educational lectures, and the PRESS program for newly diagnosed PD patients.



- ▶ The facial nerve program hosted several virtual webinars with experts from around the country.

- ▶ Providence Saint John's hosted PNI experts during a month of events highlighting brain tumor awareness in May.

### *In 2022...*

- ▶ We will continue producing all our digital education content.
- ▶ Our support groups for patients and caregivers will focus on the areas of brain tumors, pituitary disorders, stroke, Parkinson's disease, and neurodegenerative conditions.
- ▶ ENT specialists will launch a regular educational newsletter. PNI will release a comprehensive Brain Matters magazine issue in the Fall.
- ▶ Through webinars and other online and live forums, our providers will aim to reach broader patient audiences.



*Think Neuro podcast host Anthony Effinger & Daniel Kelly MD*



FOLLOW US ON SOCIAL MEDIA!      



► The PNI website PACIFICNEURO.ORG surpassed a milestone of one million annual users in 2021. The Think Neuro podcast aired each week with over 100K lifetime downloads.

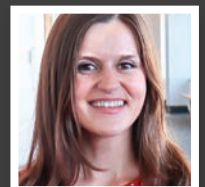
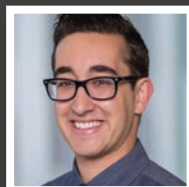
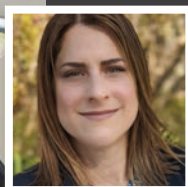
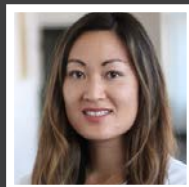
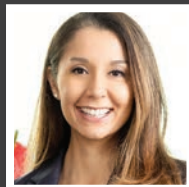
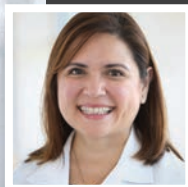
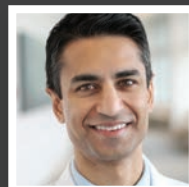
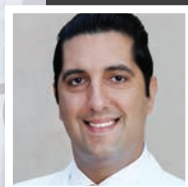
► We continued to produce educational and informative content in the form of press releases, blogs, monthly newsletters, videos, and a robust social media presence with over a thousand posts and videos.



► Stories about PNI's research, programs, and experts ran in the Saint John's and Health Matters magazines throughout the year. Our experts appeared in over two hundred media stories.



► We sponsored the Pituitary Network Association, National Multiple Sclerosis Society, and Acoustic Neuroma Association, which provide important resources for patients. We consistently supported our local public radio station, KCRW.



Omid Mehdizadeh MD; David Butler MD; Stella Panos PhD; Abbas Anwar MD; Jose Carrillo MD; Giselle Tamula MSN NP-C; Karina Sergi MS MFT; Claudia Wong FNP-BC; Sharmyn McGraw; Dana Rivera; Jennifer Bramen PhD; Mini Gill MD MHA BSN RN; Ryan Glatt MS CPT NBC-HWC; Molly Rapozo MS RDN CD; Amelia Garrison MPhil

## PNI FOUNDATION

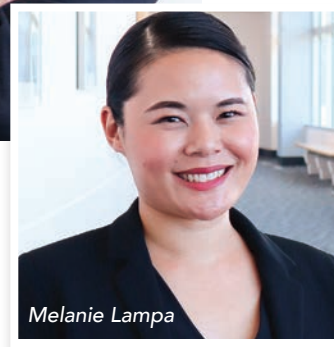
PNIF supports the clinical trials, research, patient education, community outreach, and administration teams, working in partnership with Saint John's Health Center Foundation to champion PNI's mission.

- ▶ In 2021, the PNIF foundation team grew significantly to support the many new clinical trials of the PNI faculty.
- ▶ We welcomed our new Director of Research Administration & Operations, Melanie Lampa.
- ▶ Philanthropy is the backbone of PNIF's ability to innovate, sustain, and grow the programs and services that make a real difference in diagnosing, treating, and preventing disorders of the brain and nervous system. Support from our donor community this year continued to fuel our commitment to excellence in research and patient care. Many donors contributed vital funding towards research priorities including the brain health, TRIP, and neuro-oncology programs.
- ▶ In its second year, Will & Cary Singleton's transformational gift of \$40M facilitated great strides in initiating advances to address and cure Alzheimer's disease and other related memory disorders.
- ▶ We continued to promote our programs resulting in increased brand recognition at local, national and international levels.

VICE PRESIDENT, PNIF: Melissa Coleman, Esq

### *In 2022...*

We are excited to begin 2022 with a revitalized PNI Foundation board of directors and advisors. We continue our philanthropic partnership between PNI Foundation and Saint John's Health Center Foundation. With plans focused on development and fundraising, we aim to fulfill our mission and expand the availability of innovative life-altering and life-sustaining treatments for our current and future patients with all types of neurological disorders.



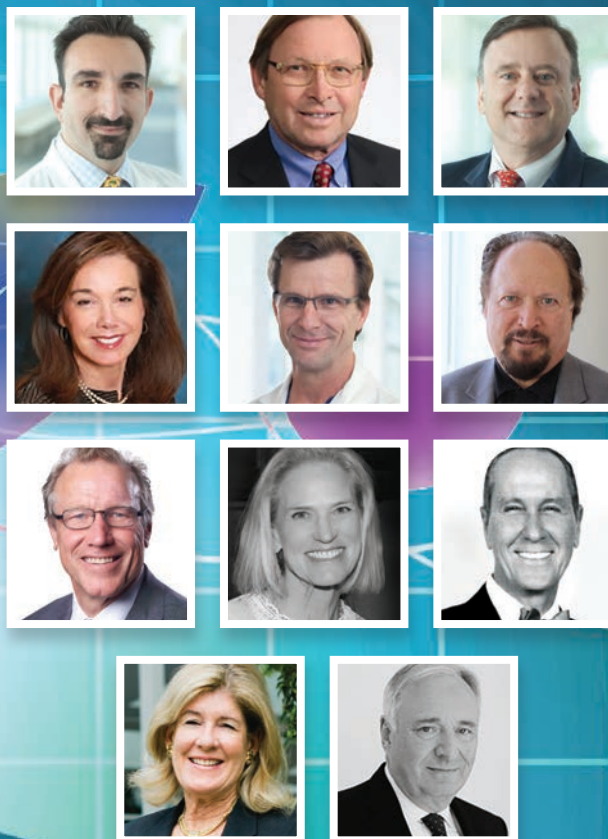
**PACIFIC  
NEUROSCIENCE  
INSTITUTE®**  
**FOUNDATION**

**Saint John's  
Health Center**  
**FOUNDATION**

- ▶ For more information about how to support Pacific Neuroscience Institute, please visit [pacificneuro.org/foundation](https://pacificneuro.org/foundation) or call **PNI Foundation** at 424-465-1551.



## PNIF BOARD



Garni Barkhoudarian MD; Thomas Geiser; Chester Griffiths MD;  
Mary Ellen Kanoff; Daniel Kelly MD; Howard Krauss MD;  
Neil Martin MD; Lisa Nesbitt; Ted Schneider;  
Donna Tuttle; Roger Wacker

## ADVISORY COMMITTEE



Mary Flaherty; Jae Goodman; Santosh Kesari MD PhD; Robert Klein; Blaine Lourde;  
Michael Ricks; Carole Schwartz; Louie Schwartzberg; Donna Schweers; Carla Mann Woods

## PNI MEDICAL GROUP

### FOUNDERS

#### CHESTER F. GRIFFITHS, MD

Director, Eye, Ear & Skull Base Center;  
ENT Surgeon

#### DANIEL F. KELLY, MD

Director, PNI, and Director, Brain Tumor Center and  
Pituitary Disorders Center; Neurosurgeon

#### SANTOSH KESARI, MD, PHD

Director, Neuro-oncology, Neuroscience Research Center;  
Neuro-oncologist

#### HOWARD R. KRAUSS, MD

Director, Eye, Ear & Skull Base Center;  
Neuro-ophthalmologist

### PHYSICIANS & PHDS

#### ABBAS A. ANWAR, MD

Otolaryngology - Head & Neck Surgeon,  
Eye, Ear & Skull Base Center

#### GARNI BARKHOUDARIAN, MD

Director, Adult Hydrocephalus Center &  
Facial Pain Center; Co-Director Pituitary Disorders Center;  
Neurosurgeon

#### KIRSTY BORTNIK, PHD, ABPP-CN

Clinical Neuropsychologist, Brain Health Center

#### DAVID M. BUTLER, MD

ENT and Plastic & Reconstructive Surgeon,  
Eye, Ear & Skull Base Center

#### WILLIAM G. BUXTON, MD

Director, Neuromuscular & Neurodiagnostic Medicine,  
and Fall Prevention, Brain Health Center; Adult  
Neurologist

#### JOSE A. CARRILLO, MD

Neuro-oncologist, Brain Tumor Center

#### NATALIE DIAZ, MD

Movement Neurologist, Movement Disorders Center

#### BARBARA S. GIESSER, MD

Multiple Sclerosis Neurologist, Brain Health Center

#### SHANTHI GOWRINATHAN, MD

Director, Psycho-oncology, Brain Health Center

#### JIAN GUAN, MD

Spine Neurosurgeon, Spine Health Center

#### KEITH HEINZERLING, MD

Director, Treatment & Research In Psychedelics,  
Brain Health Center; Addiction Medicine

#### SAMUEL HOU, MD, PHD

Neuro-interventional Surgeon,  
Stroke & Neurovascular Center

#### ADI IYER, MD, MS

Neurosurgeon, Neuro-interventional Surgeon,  
Stroke & Neurovascular Center

#### SCOTT A. KAISER, MD

Director, Geriatric Cognitive Health, Brain Health  
Center; Geriatric Family Medicine

#### AMIT KOCHHAR, MD

Director, Facial Nerve Disorders Program, ENT, facial  
nerve, and Plastic & Reconstructive Surgeon; Eye, Ear &  
Skull Base Center

#### JEAN-PHILIPPE LANGEVIN, MD

Director, Restorative Neurosurgery, Movement Disorders  
Center; Director Neuro-Spine Surgery, Spine Institute,  
PNI-South Bay; Neurosurgeon

#### NEIL A. MARTIN, MD

Director of Innovation and Quality; Neurosurgeon

#### OMID B. MEHDIZADEH, MD

Otolaryngologist, and Head & Neck (ENT), and Nasal,  
Sinus & Skull Base Surgeon; Eye, Ear & Skull Base Center

#### DAVID A. MERRILL, MD, PHD

Director, Brain Health Center; Geriatric Psychiatrist

#### STELLA PANOS, PHD

Director, Neuropsychology, Brain Health Center;  
Adult & Geriatric Neuropsychologist

#### MELITA PETROSSIAN, MD

Director, Movement Disorders Center; Neurologist and  
Movement Disorders Specialist

#### VERNA R. PORTER, MD

Director, Dementia, Alzheimer's Disease and  
Neurocognitive Disorders Programs, Brain Health  
Center; Adult Neurologist

**PNI - Santa Monica | 310-582-7640 | 2125 Arizona Ave, Santa Monica, CA 90404**

**PNI - South Bay | 424-212-5361 | 5215 Torrance Blvd, Torrance, CA 90503**



**BENJAMIN PULLI, MD**

Neuro-interventional Surgeon, Stroke & Neurovascular Center

**CHRISTOPHER PUTMAN, MD**

Neuro-interventional Surgeon, Stroke & Neurovascular Center

**NOUZHAN SEHATI, MD**

Neurosurgeon, Brain Tumor Center

**AKANKSHA SHARMA, MD**

Neuro-oncologist, Brain Tumor Center

**WALAVAN SIVAKUMAR, MD**

Director, Neurovascular Surgery, PNI;  
Director, Neurosurgery, PNI-South Bay;  
Neurosurgeon

**JASON TARPLEY, MD, PHD**

Director, Stroke & Neurovascular Center;  
Vascular and Interventional Neurologist

**COURTNEY VOELKER, MD, PHD**

Director, Otology/Neurotology-Lateral  
Skull Base Surgery; Director, Adult &  
Pediatric Cochlear Implant Program

**NAVEED WAGLE, MD**

Neuro-oncologist, Brain Tumor Center

**EVAN WALGAMA, MD**

Head & Neck Surgical Oncologist,  
Eye, Ear & Skull Base Center

---

*Because we weren't able to spotlight everyone*

**FIND OUT ABOUT OUR AMAZING  
CLINIC, RESEARCH, & FOUNDATION STAFF**



# PACIFIC NEUROSCIENCE INSTITUTE®

2125 Arizona Ave., Santa Monica, CA 90404  
5215 Torrance Blvd., #300, Torrance, CA 90503

POSTAGE  
HERE



Locations **9**



Community Outreach **14**