

FOCUSED ULTRASOUND AT PNI SOUTH BAY: AN INCISIONLESS OPTION FOR TREMOR RELIEF

Introducing **focused ultrasound (fUS)** treatment for **essential tremor** and **tremor-dominant Parkinson's disease**. Coming soon to PNI-South Bay, Providence Little Company of Mary. **fUS** is an incisionless treatment for patients who have not responded to medication. Learn more about this advanced, leading-edge treatment.

[LEARN MORE](#)

★ Spotlight Stories | June 2025



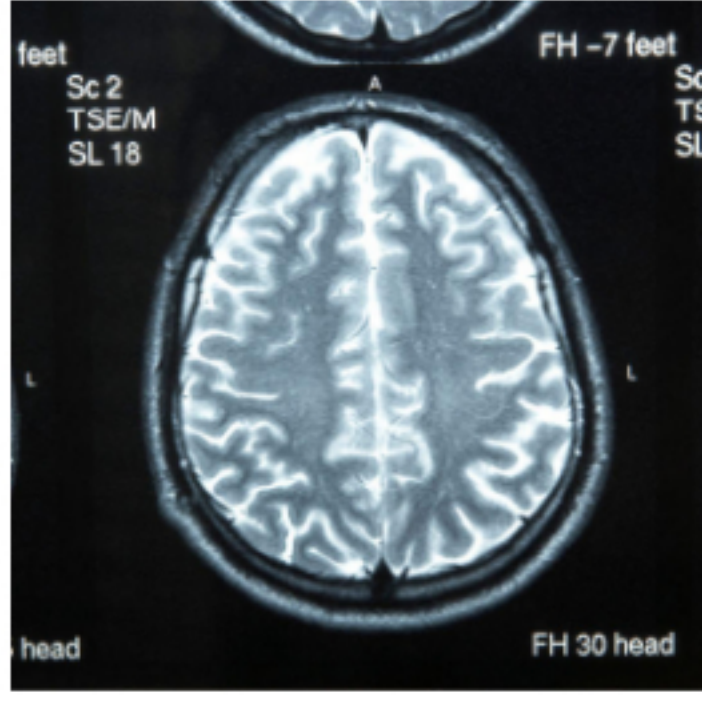
Pituitary Gland Disorders in Women

The pituitary gland regulates key hormones, and its disorders can affect women's health, fertility, and energy.

[Find Out More](#)


How Do Cochlear Implants Work?

Explore the technology behind these devices and how they help restore hearing.

[Learn More](#)


Boosting Brain Blood Flow in Alzheimer's Disease

Lifestyle changes may boost brain blood flow and improve metabolic health in early Alzheimer's. **Dr. Jennifer Bramen** reports.

[Learn More](#)


The 6 Core Pillars of Brain Wellness

Dr. Shannel Elhelou and **Ryan Glatt** discuss 6 important factors that support brain health in older adults.

[Apple Podcasts](#) | [Spotify](#) | [Simplecast](#) | [Watch on YouTube](#)

[Listen Now](#)

★ Events



Food, Mood, & Function Webinar

Wednesday, June 4, 2025 | Virtual | 12 pm to 1 pm

Join us for this **FREE** presentation about dietary impacts on mental health and cognition, taught by **Molly Rapozo, MS, RDN**.

[Learn More >>](#)



Vital Minds: Brain Health & Memory Course

Course Dates: July 10, 17, 24, 31 | Virtual | Thursdays, 10 am - 12 pm

This course provides memory training to boost brain health and longevity.

- Boost brain health and memory.
- Optimize exercise, diet, and cognition, and reduce stress.
- Discover how to use memory effectively in real-life situations.
- Four 2-hour in-person sessions

[Learn More >>](#)



Free Community Classes with Mathilde

May Mondays with Mathilde + Lipreading

Mathilde Tranberg, Cochlear Implant Ambassador, offers free community classes on cochlear implant education and lip reading.

[Learn More >>](#)



Survivorship Day Event at Saint John's

Wednesday, June 18, 10:30 am to 1 pm | Jimmy Stewart Rose Garden at Providence Saint John's

Join an educational fair to celebrate cancer patients. Learn about the teams and services to support patients during and after treatment.

All invited. No registration required.

Think Neuro. Think PNI.

Santa Monica (310) 582-7640 | South Bay (424) 212-5361 | Burbank (818) 847-6049

Santa Monica - Torrance - Burbank - Mission Hills - Wilshire
Playa Vista - Fullerton - Orange - Mission Viejo

[VIEW OUR LOCATIONS](#)

PNI takes care of patients with a wide range of neurological conditions. Request a visit by calling (310) 582-7640 or [find a doctor at pacificneuro.org](https://www.pacificneuro.org).

Accepting new patients for virtual or office consultations.

