



PITUITARY DISORDERS PROGRAM AT PROVIDENCE SAINT JOHN'S HEALTH CENTER

We provide comprehensive care, pituitary hormonal evaluations and minimally invasive endoscopic surgery for patients with pituitary and skull base tumors.

PATIENT-CENTERED FOCUS: A multidisciplinary team approach providing tailored diagnostic and treatment plans.

EXPERIENCE, INNOVATION & RESEARCH: One of the largest series of pituitary surgeries world-wide; extensive academic publications in pituitary disorders; ongoing clinical trials and pituitary and brain tumor genomics research.

TECHNOLOGY: State-of-the-art operating suite dedicated to endoscopic and keyhole neurosurgery.

CONSISTENT QUALITY CARE: The Brain Tumor Center received the Neurosurgery Excellence Award™ in 2014. Providence Saint John's Health Center is the only hospital in California to receive Healthgrade® America's 50 Best Award™ 9 years in a row.

COMMUNITY OUTREACH: Longest running Pituitary Patient Support Group nationwide (over 12 years).

PHYSICIAN EDUCATION: Regular symposia in pituitary tumor management and endoscopic skull base surgical techniques.

DISORDERS WE TREAT

PITUITARY ADENOMAS

- Acromegaly
- Cushing's disease
- Endocrine-inactive adenoma
- Prolactinoma
- TSH-secreting adenoma
- Recurrent and residual adenoma
- Pituitary apoplexy

OTHER RELATED TUMORS & CYSTS

- Chordoma
- Craniopharyngioma
- Meningioma
- Rathke's cleft cyst
- Sellar arachnoid cyst
- Sinonasal carcinoma

CEREBROSPINAL FLUID LEAKS

HYPOPHYSITIS

PITUITARY FAILURE (HYPOPITUITARISM)



For an appointment or second opinion, please call 310-582-7450
or visit www.brain-tumor.org



**Saint John's
Health Center**
+ PROVIDENCE Health & Services



PITUITARY DISORDERS PROGRAM AT PROVIDENCE SAINT JOHN'S HEALTH CENTER

OUR EXPERT TEAM

Daniel F. Kelly, MD

Garni Barkhoudarian, MD

Chester Griffiths, MD & Kian Karimi, MD

Pejman Cohan, MD & Niloufar Ilani, MD

Howard Krauss, MD

Santosh Kesari, MD, PhD

Robert Wollman, MD & Lisa Chaiken, MD

George Teitelbaum, MD

David Krasne, MD & Yuki Takasumi, MD

Amy Eisenberg, MSN, ARNP, CNRN

Neurosurgery, PBTC Director

Neurosurgery, Faculty

Head & Neck Surgery (ENT)

Endocrinology

Neuro-Ophthalmology

Neuro-Oncology

Radiation Oncology

Interventional Neuro-Radiology

Neuropathology

Program Nurse Practitioner



DANIEL F. KELLY, MD DIRECTOR, PACIFIC BRAIN TUMOR CENTER

Dr. Kelly is internationally recognized in the field of endoscopic and keyhole brain surgery. He has numerous publications on surgical outcomes, patient satisfaction and complication avoidance for a wide range of tumors including pituitary adenomas, meningiomas, craniopharyngiomas, chordomas and metastatic brain tumors. He is the recipient of the Patients' Choice Award (2008 - 2009, 2011 - 2013) and Compassionate Doctor Award (2011 - 2013).



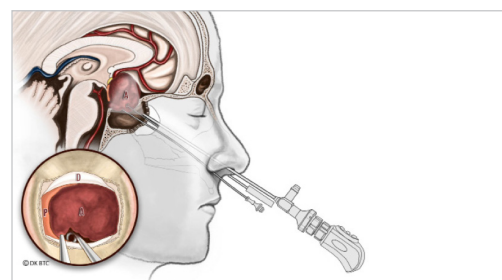
GARNI BARKHOUDARIAN, MD CO-DIRECTOR, PACIFIC BRAIN TUMOR CENTER

Dr. Barkhoudarian is a neurosurgeon with a focus on skull base and minimally invasive endoscopic surgery. He has particular interest and expertise in pituitary and parasellar tumors, intra-ventricular brain tumors, trigeminal neuralgia, hemifacial spasm, other cranial nerve syndromes and endoscopic treatment of hydrocephalus. He is director of the Providence Saint John's Skull-Base and Endoscopic Microdissection Laboratory.



RESEARCH & EDUCATION AT THE PACIFIC BRAIN TUMOR CENTER & JOHN WAYNE CANCER INSTITUTE

Through collaboration with the John Wayne Cancer Institute, PBTC physicians conduct translational research, clinical trials, continuing medical education as well as neurosurgical fellowship training.



Learn more about endoscopic pituitary surgery at:
http://brain-tumor.org/BTC_Endonasal_Surgery.aspx



Like us on: [SJ.Brain.Tumor.Center](https://www.facebook.com/SJ.Brain.Tumor.Center)



Follow us at: [saintjohns2](https://twitter.com/saintjohns2)



Visit our YouTube channel at:
[youtube/user/BrainTumorCenter](https://www.youtube.com/user/BrainTumorCenter)



For an appointment or second opinion, please call 310-582-7450
or visit www.brain-tumor.org

2121 Santa Monica Blvd., Santa Monica, CA 90404 • 310.829.5511 • www.Providence.org/StJohns



**Saint John's
Health Center**
+ PROVIDENCE Health & Services