

Dietary flavonols and risk of Alzheimer dementia

Thomas M. Holland, MD, Puja Agarwal, PhD, Yamin Wang, PhD, Sue E. Leurgans, PhD, David A. Bennett, MD, Sarah L. Booth, PhD, and Martha Clare Morris, ScD

Correspondence

Dr. Holland
thomas_holland@rush.edu

Neurology® 2020;94:1-8. doi:10.1212/WNL.0000000000008981

Abstract

Objective

To determine whether dietary intake of flavonols is associated with Alzheimer dementia.

Methods

The study was conducted among 921 participants of the Rush Memory and Aging Project (MAP), an ongoing community-based, prospective cohort. Participants completed annual neurologic evaluations and dietary assessments using a validated food frequency questionnaire.

Results

Among 921 MAP participants who initially had no dementia in the analyzed sample, 220 developed Alzheimer dementia. The mean age of the sample was 81.2 years (SD 7.2), with the majority (n = 691, 75%) being female. Participants with the highest intake of total flavonols had higher levels of education and more participation in physical and cognitive activities. In Cox proportional hazards models, dietary intakes of flavonols were inversely associated with incident Alzheimer dementia in models adjusted for age, sex, education, *APOE* ε4, and participation in cognitive and physical activities. Hazard ratios (HRs) for the fifth vs first quintiles of intake were as follows: for total flavonol, 0.52 (95% confidence interval [CI], 0.33–0.84); for kaempferol, 0.49 (95% CI, 0.31–0.77); for myricetin, 0.62 (95% CI, 0.4–0.97); and for isorhamnetin, 0.62 (95% CI, 0.39–0.98). Quercetin was not associated with Alzheimer dementia (HR, 0.69; 95% CI, 0.43–1.09).

Conclusion

Higher dietary intakes of flavonols may be associated with reduced risk of developing Alzheimer dementia.

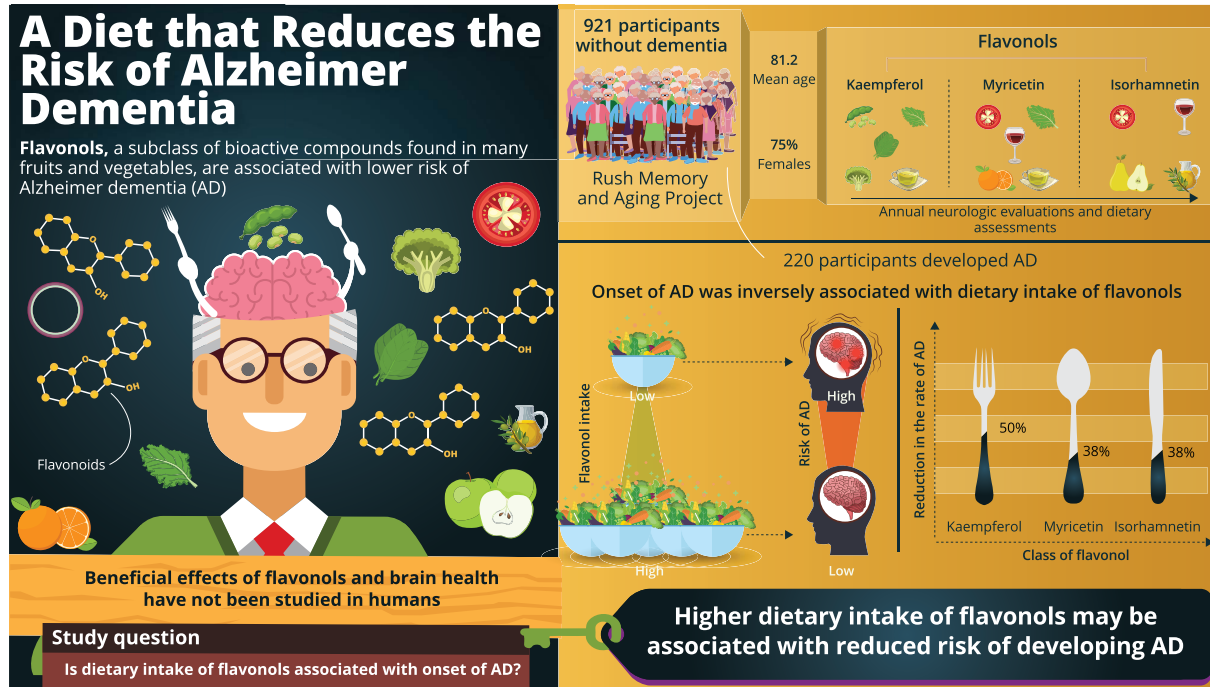
From Rush Institute for Healthy Aging (T.M.H., P.A., Y.W., M.C.M.), Rush Alzheimer's Disease Center (S.E.L., D.A.B.), and Neurological Sciences (S.E.L., D.A.B.), Rush University Medical Center, Chicago, IL; and Jean Mayer USDA Human Nutrition Research Center on Aging (S.L.B.), Tufts University, Boston, MA.

Presented at the Alzheimer's Association International Conference, Chicago, IL, 2018.

Go to [Neurology.org/N](https://www.neurology.org/N) for full disclosures. Funding information and disclosures deemed relevant by the authors, if any, are provided at the end of the article.

Glossary

AD = Alzheimer disease; BMI = body mass index; CI = confidence interval; DASH = Dietary Approaches to Stop Hypertension; FFQ = food frequency questionnaire; HR = hazard ratio; MAP = Rush Memory and Aging Project; RADC = Rush Alzheimer's Disease Center; USDA = US Department of Agriculture.



doi:10.1212/WNL.00000000000008981
Copyright © 2019 American Academy of Neurology

Neurology®

Flavonoids are a class of polyphenol representing more than 5,000 bioactive compounds that are found in a variety of fruits and vegetables. A number of flavonoid classes, including flavonols, are known to have antioxidant and anti-inflammatory properties.^{1–4} Two previous studies reported that high levels of flavonoid intakes are associated with lower risk of Alzheimer dementia^{1,5} but to date, there has not been investigation of the flavonol subclass in humans, even though it is the most abundant flavonoid in foods. Animal studies have demonstrated that dietary flavonols improved memory and learning and decreased severity of Alzheimer disease neuropathology including β -amyloid, tauopathy, and microgliosis.^{6,7} In this study, we related dietary intakes of flavonols, including kaempferol, quercetin, myricetin, and isorhamnetin, to the development of Alzheimer dementia in a large community study.

Methods

Study population

The study was conducted in the Rush Memory and Aging Project (MAP), an ongoing (1997–present) community-based cohort of older persons dwelling in Chicago area retirement communities and public housing. Volunteers, who have consented to being participants of MAP, have no known

dementia at enrollment and undergo annual clinical neurologic examinations.⁸ Beginning in 2004, participants were asked to complete a comprehensive food frequency questionnaire (FFQ) during their annual evaluations. As of August 2018, a total of 1,920 older persons were enrolled in MAP, and 1,062 completed a FFQ, of whom 970 had at least 2 clinical evaluations to assess disease incidence. We excluded 36 participants who had a diagnosis of probable Alzheimer dementia at the time of their baseline diet assessment and 13 participants who had missing data on model covariates, leaving 921 participants for the analyses relating flavonol intake to incident Alzheimer dementia.

Standard protocol approvals, registrations, and patient consents

The institutional review board of Rush University Medical Center approved the study and all participants gave written informed consent.

Data availability

Anonymized data, used for the study, are available through the Rush Alzheimer's Disease Center (RADC). Qualified investigators can find information regarding the formal requirements for access to data on the RADC research resource-sharing hub (<https://www.radc.rush.edu>).

Alzheimer dementia

As described previously,⁹ the clinical diagnosis of probable Alzheimer dementia was determined at each annual evaluation using a 3-stage process: computerized scoring of performance on 19 cognitive tests and impairment rating for cognitive domains based on a decision tree mimicking clinical judgment; clinical judgment after review of the impairment ratings and clinical information by a neuropsychologist blinded to participant demographics; and final diagnostic classification by an experienced clinician (neurologist, geriatrician, or geriatric nurse practitioner) after review of all available data and examination of the participant. The clinical diagnoses of Alzheimer and other dementias are based on criteria of the joint working group of the Neurologic and Communicative Disorders and Stroke and the Alzheimer's Disease and Related Disorders Association.^{9,10}

Dietary assessment

Diet was assessed by a modified version of the Harvard FFQ that was validated for use in an older Chicago population.¹¹ The FFQ ascertains usual frequency of intake of 144 food items over the previous 12 months. Nutrient levels and total energy for each food item were based either on natural portions (e.g., 1 egg) or according to age- and sex-specific serving sizes from national diet surveys. For food levels (grams per serving) of the flavonols (kaempferol, quercetin, myricetin, and isorhamnetin) and total flavonols (calculated as the sum of the 4 individual flavonols), we used the Nutrition Coordinating Center Flavonoid and Proanthocyanidin Provisional Table from University of Minnesota. The majority of values in this table are based on the US Department of Agriculture (USDA) Database for the Flavonoid Content of Selected Foods, Release 3.3 (March 2018) and the USDA Database for the Proanthocyanidin Content of Selected Foods, Release 2.1 (March 2018). Some values, however, are based on journal values from other studies.¹² The bioactive contents of the food items were multiplied by the intake frequency and summed across all FFQ items. The top food item contributors to the individual flavonols in our cohort were kale, beans, tea, spinach, and broccoli for kaempferol; tomatoes, kale, apples, and tea for quercetin; tea, wine, kale, oranges, and tomatoes for myricetin; and pears, olive oil, wine, and tomato sauce for isorhamnetin. Energy adjustment of nutrients was computed using the regression residual method.¹³ Flavonol intakes were based on the first completed valid FFQ, the analytic baseline for each participant in the analyses of incident Alzheimer dementia.

Model covariates

Nondietary model covariates were obtained from structured interview questions and measurements at the clinical evaluation of participants' analytic baseline. Age (in years) was computed from self-reported birth date and date of the baseline cognitive assessment. Education (years) is self-reported years of regular schooling. *APOE* genotyping was performed using high-throughput sequencing as previously described.¹⁴ Participation in cognitively stimulating activities was computed as the

average frequency rating, based on a 5-point scale, of different activities (e.g., reading, playing games, writing letters, visiting the library).¹⁵ Physical activity (hours per week) was computed from self-reported minutes spent within the previous 2 weeks on 5 activities: walking for exercise, yard work, calisthenics, biking, and water exercise.¹⁶ Number of depressive symptoms was assessed by a modified 10-item version of the Center for Epidemiologic Studies–Depression scale.¹⁷ Body mass index (BMI) (weight in kg/height in m²) was computed from measured weight and height and modeled as 2 indicator variables, BMI ≤ 20 and BMI ≥ 30 , with BMI >20 and <30 as the referent. Hypertension history was determined by self-reported medical diagnosis, measured blood pressure (average of 2 measurements ≥ 160 mm Hg systolic or ≥ 90 mm Hg diastolic) or current use of hypertensive medications. Myocardial infarction history was based on self-reported medical diagnosis or use of cardiac glycosides (e.g., lanoxin, digitoxin). Diabetes history was determined by self-reported medical diagnosis or current use of diabetic medications. Information on medications was obtained by interviewer inspection. Clinical diagnosis of stroke was based on clinician review of self-reported history, neurologic examination, and cognitive testing history.¹⁸

Statistical analyses

We used Cox proportional hazards models programmed in SAS 9.4 (SAS Institute, Cary, NC) to investigate the relationships between dietary intakes of the flavonols and the development of Alzheimer dementia. Basic-adjusted models included terms for confounders with the most established scientific evidence for association with Alzheimer dementia: age, sex, education, participation in cognitively stimulating activities, physical activity, and *APOE* $\epsilon 4$ status.⁸ Further analyses added covariates to the basic-adjusted models. We analyzed flavonol intakes modeled in quintiles and as a single ordinal variable in which intake levels within each quintile were scored the median quintile value. We report the *p* value of the ordinal variable as a measure of linear trend. Effect modification of flavonol associations by various covariates was investigated by including a multiplicative term between the flavonol categorical trend variable and the potential effect modifier in the basic-adjusted model. Statistically significant interactions were further investigated by reanalyzing the basic-adjusted models within strata of the effect modifier. Throughout, statistical significance corresponds to $p \leq 0.05$.

Results

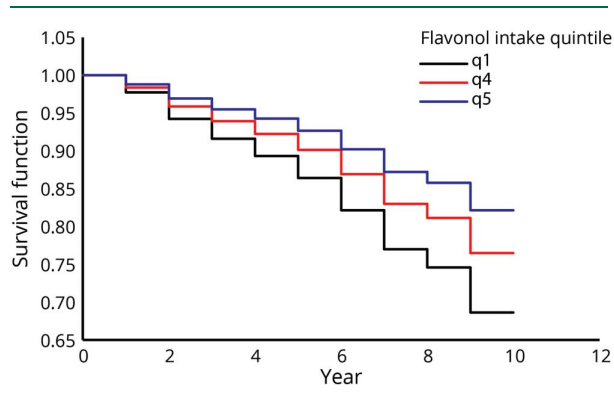
Among the 921 MAP participants who initially did not have dementia in the analyzed sample, 220 developed Alzheimer dementia (39.06 cases per 1,000 person-years) during the follow-up period (mean follow-up 6.1 years; SD 3.1). The mean age of the sample was 81.2 years (SD 7.2), with the majority ($n = 691$, 75%) being female (table 1). Participants with the highest intake of total flavonols had higher levels of education and were more likely to participate in physical and cognitive activities (table 1). Spearman correlation

Table 1 Cohort characteristics by quintile of 921 Rush Memory and Aging Project participants

Baseline characteristic	Total flavonol intake quintile, mean \pm SD or n (%)				
	Q1	Q2	Q3	Q4	Q5
No.	182	185	185	183	186
Total flavonol intake, mg/d	5.3 \pm 1.1	7.5 \pm 0.5	9.2 \pm 0.5	11.0 \pm 0.7	15.3 \pm 2.7
Age, y	81.6 \pm 7.5	80.7 \pm 7.4	82.0 \pm 6.8	81.7 \pm 7.0	80.0 \pm 7.0
Education, y	14.2 \pm 2.8	14.7 \pm 3.1	14.9 \pm 2.8	15.4 \pm 2.7	15.6 \pm 3.1
Physical activity, h/wk	2.3 \pm 3.3	3.4 \pm 3.5	3.2 \pm 3.5	3.8 \pm 4.0	4.1 \pm 3.8
Late-life cognitive activities, n/wk	3.1 \pm 0.7	3.2 \pm 0.7	3.2 \pm 0.7	3.3 \pm 0.6	3.4 \pm 0.6
Total energy, kCal/d	1,685 \pm 679	1,761 \pm 541	1,825 \pm 540	1,759 \pm 496	1,638 \pm 391
Female	146 (80)	139 (75)	141 (76)	133 (73)	132 (71)
APOE ϵ 4	42 (23)	37 (20)	41 (22)	36 (20)	43 (23)
Depressive symptoms	1.35 \pm 1.8	1.12 \pm 1.7	1.06 \pm 1.5	0.83 \pm 1.3	0.98 \pm 1.5
Body mass index	27.9 \pm 5.4	27.4 \pm 5.2	26.6 \pm 4.7	27.4 \pm 5.2	26.9 \pm 4.8
Cardiovascular conditions					
Diabetes	24 (13)	36 (20)	26 (14)	16 (9)	18 (10)
Hypertension	141 (78)	144 (77)	143 (80)	145 (80)	129 (71)
Myocardial infarction	34 (19)	24 (13)	32 (17)	30 (16)	31 (17)
Stroke	24 (15)	20 (11)	20 (11)	16 (9)	17 (10)

coefficients among dietary intakes of the individual flavonols were low to moderate (range of $r = 0.14$ to $r = 0.51$), as were the correlations of flavonols to high-quality diet scores (Dietary Approaches to Stop Hypertension [DASH], Mediterranean, and Mediterranean–DASH Intervention for Neurodegenerative Delay [MIND]) ($r = 0.13$ – 0.48).

Dietary intakes of total flavonols (figure 1) and the flavonol constituents were statistically significantly associated with

Figure 1 Estimated survival function of Alzheimer dementia by quintiles 1, 4, and 5 of dietary intake of total flavonols over time

reduced risk of Alzheimer dementia (table 2). Participants in the highest vs lowest quintiles of total flavonol intake had a 48% lower rate of developing AD in the basic-adjusted model including the covariates age, sex, education, APOE ϵ 4, late-life cognitive activity, and physical activity (table 2). Among the flavonol constituents, isorhamnetin, kaempferol (figure 2), and myricetin were each associated with a reduction in the rate of incident AD, with reductions of 38%, 50%, and 38%, respectively, for persons in the fifth vs first quintiles of intake (table 2). Dietary intake of quercetin was not associated with incident AD (hazard ratio [HR], 0.70; confidence interval [CI], 0.44–1.10). The tests for linear trend were statistically significant for total flavonols and all subclasses except for quercetin ($p = 0.06$).

We next investigated whether the flavonol associations with AD could be attributed to their potential protective effects on cardiovascular conditions by adding terms for diabetes, hypertension, myocardial infarction, and stroke to the basic model. There were no substantial changes in the results (table 2). We then explored whether intakes of other nutrients related to AD, including vitamin E, saturated fat, folate, lutein, and omega-3 fatty acids, could account for the results. However, there were no material changes in the estimated effects (table 2).

In secondary analyses, we further adjusted for BMI and depression, covariates that may be both risk factors and clinical sequelae of AD.⁸ The effect estimates for flavonols in these

Table 2 Estimated effects of energy-adjusted dietary intakes of flavonols on incident Alzheimer dementia among 921 participants of the Rush Memory and Aging Project over an average of 6.1 years

	Total flavonols, hazard ratio (95% confidence interval)					p For trend
	Q1	Q2	Q3	Q4	Q5	
Intake, mg/d	5.3	7.5	9.2	11.0	15.3	
Basic model^a	ref	0.84 (0.57–1.25)	0.98 (0.67–1.44)	0.71 (0.46–1.10)	0.52 (0.33–0.84)	0.006
Basic + CVD^b	ref	0.85 (0.56–1.29)	1.04 (0.70–1.55)	0.73 (0.47–1.14)	0.56 (0.35–0.92)	0.02
Basic + other nutrients^c	ref	0.87 (0.58–1.30)	1.01 (0.67–1.52)	0.76 (0.48–1.21)	0.57 (0.32–1.01)	0.06
Kaempferol						
Intake, mg/d	0.52	1.00	1.48	2.25	4.25	
Basic	ref	0.73 (0.49–1.07)	0.89 (0.61–1.30)	0.56 (0.37–0.86)	0.50 (0.31–0.79)	0.002
Basic + CVD	ref	0.72 (0.48–1.07)	0.87 (0.59–1.28)	0.48 (0.31–0.76)	0.48 (0.30–0.78)	0.001
Basic + other nutrients	ref	0.73 (0.49–1.08)	0.90 (0.61–1.34)	0.57 (0.36–0.89)	0.50 (0.27–0.91)	0.02
Quercetin						
Intake, mg/d	3.98	5.68	6.83	8.10	10.73	
Basic	ref	0.99 (0.66–1.49)	1.11 (0.75–1.65)	0.78 (0.51–1.20)	0.70 (0.44–1.10)	0.06
Basic + CVD	ref	0.97 (0.63–1.48)	1.18 (0.78–1.77)	0.77 (0.48–1.21)	0.76 (0.48–1.21)	0.14
Basic + other nutrients	ref	1.03 (0.68–1.55)	1.17 (0.78–1.75)	0.86 (0.54–1.35)	0.82 (0.49–1.37)	0.35
Isorhamnetin						
Intake, mg/d	0	0.03	0.06	0.12	0.28	
Basic	ref	1.04 (0.67–1.60)	1.0 (0.67–1.49)	0.97 (0.64–1.48)	0.62 (0.39–0.98)	0.02
Basic + CVD	ref	1.16 (0.74–1.81)	1.06 (0.69–1.63)	1.10 (0.70–1.71)	0.68 (0.42–1.09)	0.04
Basic + other nutrients	ref	1.05 (0.68–1.62)	1.01 (0.68–1.51)	1.02 (0.67–1.57)	0.66 (0.42–1.06)	0.049
Myricetin						
Intake, mg/d	0.14	0.29	0.43	0.65	1.37	
Basic	ref	0.87 (0.60–1.27)	0.83 (0.56–1.24)	0.66 (0.43–1.02)	0.62 (0.40–0.97)	0.03
Basic + CVD	ref	0.87 (0.59–1.28)	0.91 (0.60–1.39)	0.71 (0.46–1.11)	0.63 (0.40–1.01)	0.04
Basic + other nutrients	ref	0.89 (0.61–1.30)	0.85 (0.57–1.28)	0.72 (0.46–1.12)	0.66 (0.42–1.05)	0.07

^a Basic adjustment: age, sex, education, *APOE* ε4, late-life cognitive activity, physical activity.

^b Cardiovascular disease (CVD): myocardial infarction, stroke, diabetes, hypertension.

^c Other nutrients: saturated fat, omega-3 fatty acids, vitamin E, folate, lutein.

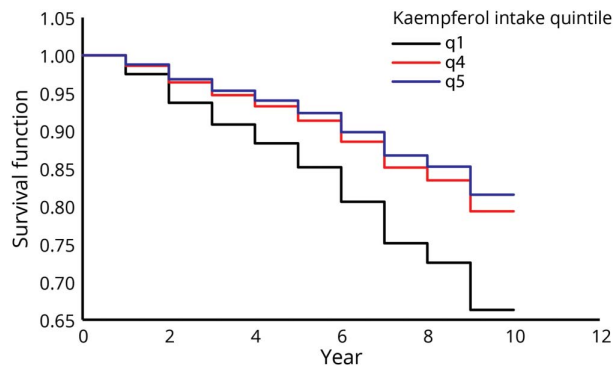
models were either materially unchanged or more protective. The association of total flavonols with Alzheimer dementia was statistically significant; the HR (95% CI) for Q5 vs Q1 of total flavonol intake was 0.49 (0.30–0.79) ($p = 0.003$). Effect estimates for the flavonol constituents were as follows: kaempferol (HR Q5 vs Q1, 0.52; 95% CI, 0.33–0.83; $p = 0.005$), quercetin (HR Q5 vs Q1, 0.60; 95% CI, 0.38–0.97; $p = 0.02$), isorhamnetin (HR Q5 vs Q1, 0.55; 95% CI, 0.34–0.88; $p = 0.008$), and myricetin (HR Q5 vs Q1, 0.62; 95% CI, 0.39–0.98; $p = 0.02$).

In subsequent analyses, we investigated independent effects of the flavonols by simultaneously modeling all 4 (kaempferol, quercetin, myricetin, and isorhamnetin) in the basic-adjusted

model. In these analyses, only kaempferol (p for trend = 0.03) had an independent association with AD. The other flavonols were not statistically significant: isorhamnetin (p for trend = 0.053), quercetin (p for trend = 0.83), and myricetin (p for trend = 0.35).

To investigate the extent to which the observed protective associations of flavonol intake may be biased by preclinical effects of AD on dietary behavior, we reanalyzed the data after excluding cases ($n = 29$) that were diagnosed during the first year of follow-up. In these analyses, the findings were unchanged for intakes of total flavonol (Q5 vs Q1: HR, 0.57; 95% CI, 0.34–0.94; p for trend = 0.03), kaempferol (HR, 0.49; 95% CI, 0.29–0.80; $p = 0.007$), isorhamnetin

Figure 2 Estimated survival function of Alzheimer dementia by quintiles 1, 4, and 5 of dietary intake of kaempferol over time



(HR, 0.67; 95% CI, 0.40–1.10; $p = 0.04$), and myricetin (HR, 0.54; 95% CI, 0.33–0.89; $p = 0.01$). However, the findings for quercetin were not statistically significant (HR, 0.68; 95% CI, 0.42–1.12; $p = 0.11$). In further analyses that removed the first 2 years of follow-up ($n = 65$), the flavonol associations were no longer statistically significant at $p \leq 0.05$, but strongly suggestive: total flavonol (p -trend = 0.051), kaempferol (p -trend = 0.051), quercetin (p -trend = 0.07), myricetin (p -trend = 0.08), and isorhamnetin (p -trend = 0.13). We investigated to what extent baseline mild cognitive impairment could bias the protective association of dietary flavonols and Alzheimer dementia. We reran our basic model after excluding those with MCI at baseline ($n = 217$). The statistical significance remained for total flavonol (HR, 0.41; 95% CI, 0.20–0.84; $p = 0.02$) and kaempferol (HR, 0.51; 95% CI, 0.27–0.99; $p = 0.045$). The association with quercetin (HR, 0.52; 95% CI, 0.26–1.02; $p = 0.03$) was highly suggestive while myricetin ($p = 0.38$), and isorhamnetin ($p = 0.23$) became nonsignificant.

We explored potential effect modification in the observed associations by age (≤ 80 , > 80), sex, education (≤ 12 years, > 12 years), and APOE $\epsilon 4$ status in the basic-adjusted model. The only statistically significant modification of effect was by sex, such that the association of total flavonol intake was stronger in men (Q5 vs Q1: HR, 0.24; 95% CI, 0.08–0.76) than in women (Q5 vs Q1: HR, 0.59; 95% CI, 0.35–0.99).

Discussion

In this community-based prospective study of older persons, we found evidence that higher flavonol intake through food sources, and kaempferol and isorhamnetin in particular, may be protective against the development of Alzheimer dementia. The associations were independent of many diet and lifestyle factors and cardiovascular-related conditions.

To our knowledge, no previous study has examined the relation of flavonol intake with incident Alzheimer dementia. Two previous studies reported inverse associations with incident AD and intake of the larger class of total flavonoids, of which flavonols are a subclass.^{1,5} In a previous study, we found that kaempferol intake, which is abundant in leafy green vegetables, was associated with slower rate of cognitive decline.¹⁹ The Nurses' Health Study observed higher global cognitive scores over 6 years among women with higher flavonoid intakes.²⁰ The PAQUID study (Personnes Agées Quid) reported an association between total flavonoid intake and cognitive decline over 10 years of follow-up.²¹ Earlier diet studies have demonstrated an association of healthy diet patterns with Alzheimer dementia and cognitive decline.^{22,23} Although the correlations of these diets with flavonol intake, as mentioned above, are mild to moderate, these studies lend support to the prior temporal effect of dietary exposure on Alzheimer dementia.

We focused on flavonols for these analyses due to the fact that the biochemical composition of this flavonoid subclass likely makes them particularly effective antioxidants.^{2,3} The catechol structure, found in polyphenolic compounds and abundant in flavonols, has the capability to act as a radical ion scavenger. This action can take place in the plasma, and the gut, where flavonols can limit reactive oxygen species formation.³ In animal models, treatment with kaempferol and myricetin significantly reduced the level of oxidative stress via increased activity of superoxide dismutase in the hippocampus and improved learning and memory capabilities.⁶ Another model of transgenic mice with AD-like pathology found that 3-month treatment with a myricetin derivative, dihydromyricetin, improved cognition and reduced the accumulation of soluble $A\beta_{40}$ in the hippocampus and both soluble and insoluble $A\beta_{42}$ in the cortex.²⁴ In mice that were injected with $A\beta_{25-35}$ to induce an Alzheimer dementia-like disease, the mice that were then supplemented with oral intake of quercetin exhibited improved cognitive function and memory and inhibited lipid peroxidation and nitric oxide in the brain vs the $A\beta_{25-35}$ control group.²⁵ Another animal model of triple transgenic AD mice demonstrated that mice treated with quercetin vs the vehicle-treated mice had significantly lower β -amyloidosis and tauopathy and decreased astrogliosis and microgliosis in several parts of the brain. Quercetin supplementation also improved cognitive function as measured by memory and learning.⁷ Animal models have demonstrated that flavonoids may act directly on neurons and glia through a signal transduction cascade. There is also an indirect effect via interaction with the cerebral vascularity as well as the blood–brain barrier.^{4,26} Furthermore, *in vitro* studies have demonstrated the capability of some flavonoid constituents and metabolites to cross the blood–brain barrier.²⁷

The study has a number of strengths that lend to the validity of the findings. These include the prospective design among

community-dwelling residents, structured annual neurologic assessments, standardized diagnostic criteria for Alzheimer dementia, a long follow-up period (up to 12 years), use of a comprehensive, validated diet assessment tool, and annual assessment of the major lifestyle and other factors associated with dementia. A limitation of the study is its observational study design, and thus the possibility of residual confounding by measured and unmeasured factors. The FFQ is a self-reported tool and may introduce recall bias. Given that our population sample was almost exclusively white, highly educated, and altruistically motivated (organ donation is a requirement for participation), the findings cannot be generalized to nonwhite, low-educated, or nonvolunteer populations. In addition, there is the possibility that dietary changes in participants with subclinical AD biased the observed estimates of effect. It is difficult to determine whether this could lead to underestimation or overestimation of the observed associations. However, supportive findings from long follow-up studies of flavonoid intake and cognitive decline^{20,21} would appear to lessen this alternative explanation of our findings.

Our findings suggest that dietary intake of flavonols may reduce the risk of developing Alzheimer dementia. Confirmation of these findings is warranted through other longitudinal epidemiologic studies and clinical trials in addition to further elucidation of the biologic mechanisms. Although there is more work to be done, the associations that we observed are promising and deserve further study.

Acknowledgment

Thomas M. Holland, MD, and Martha Clare Morris, ScD, had full access to all the data in the study and take responsibility for the integrity of the data and the accuracy of the data analysis. The authors thank the Rush Alzheimer's Disease Center study staff and the Memory and Aging Project participants.

Study funding

Supported by the NIH, National Institute on Aging grant RF1AG051641 (PIs: Martha Clare Morris, ScD; Sarah L. Booth, PhD) and grant R01AG017917 (PI: David A. Bennett, MD); and partially supported by the USDA Agricultural Research Service under Cooperative Agreement No. 58-1950-7-707. Any opinions, findings, or conclusions expressed in this publication are those of the authors and do not necessarily reflect the view of the US Department of Agriculture.

Disclosure

The authors report no disclosures relevant to the manuscript. Go to Neurology.org/N for full disclosures.

Publication history

Received by *Neurology* May 24, 2019. Accepted in final form November 12, 2019.

Appendix Authors

Name	Location	Role	Contributions
Thomas M. Holland, MD	Rush University Medical Center, Chicago, IL	Author	Responsible for the integrity of the work as a whole, significant contributions to acquisition and interpretation of the data, drafting and revising the manuscript, final approval, and is accountable for all aspects of the work
Puja Agarwal, PhD	Rush University Medical Center, Chicago, IL	Author	Made significant contributions to interpretation of the data, revising the manuscript, final approval, and is accountable for the work
Yamin Wang, PhD	Rush University Medical Center, Chicago, IL	Author	Made significant contributions to analyzing the data, revising the manuscript, final approval, and is accountable for the work
Sue E. Leurgans, PhD	Rush University Medical Center, Chicago, IL	Author	Made significant contributions to acquisition of the data, revising the manuscript, final approval, and is accountable for the work
David A. Bennett, MD	Rush University Medical Center, Chicago, IL	Author	Made significant contributions to the concept, revising the manuscript, final approval, and is accountable for the work
Sarah L. Booth, PhD	Tufts University, Boston, MA	Author	Made significant contributions to interpretation of data, revising the manuscript, final approval, and is accountable for the work
Martha Clare Morris, ScD	Rush University Medical Center, Chicago, IL	Author	Made substantial contributions to the concept, interpretation, and design of the work, revised the work and gave final approval, has accountability for the work

References

- Engelhart MJ, Geerlings MI, Ruitenberg A, et al. Dietary intake of antioxidants and risk of Alzheimer disease. *JAMA* 2002;287:3223–3229.
- Youdim KA, Spencer JPE, Schroeter H, Rice-Evans C. Dietary flavonoids as potential neuroprotectants. *Biol Chem* 2002;383:503–519.
- Pietta P. Flavonoids as antioxidants. *J Nat Prod* 2000;63:1035–1042.
- Youdim KA, Shukitt-Hale B, Joseph JA. Flavonoids and the brain: interactions at the blood–brain barrier and their physiological effects on the central nervous system. *Free Radic Biol Med* 2004;37:1683–1693.
- Commenges D, Scotet V, Renaud S, Jacqmin-Gadda H, Barberger-Gateau P, Dartigues JF. Intake of flavonoids and risk of dementia. *Eur J Epidemiol* 2000;16:357–363.
- Lei Y, Chen J, Zhang W, et al. In vivo investigation on the potential of galangin, kaempferol and myricetin for protection of D-galactose-induced cognitive impairment. *Food Chem* 2012;135:2702–2707.
- Maria SGA, Ignacio MMJ, Ramirez-Pineda Jose R, Marisol LR, Edison O, Patricia CGG. The flavonoid quercetin ameliorates Alzheimer's disease pathology and protects cognitive and emotional function in aged triple transgenic Alzheimer's disease model mice. *Neuropharmacology* 2015;93:134–145.
- Bennett DA, Schneider JA, Buchman AS, Barnes LL, Boyle PA, Wilson RS. Overview and findings from the Rush Memory and Aging Project. *Curr Alzheimer Res* 2012;9:646–663.
- Bennett DA, Schneider JA, Aggarwal NT, et al. Decision rules guiding the clinical diagnosis of Alzheimer's disease in two community-based cohort studies compared to standard practice in a clinic-based cohort study. *Neuroepidemiology* 2006;27:169–176.

10. McKhann G, Drachman D, Folstein M. Clinical diagnosis of Alzheimer's disease: report of the NINCDS-ADRDA Work Group under the auspices of Department of Health and Human Services Task Force on Alzheimer's disease. *Neurology* 1984;34: 939–944.
11. Morris MC, Tangney CC, Bienias JL, Evans DA, Wilson RS. Validity and reproducibility of a food frequency questionnaire by cognition in an older biracial sample. *Am J Epidemiol* 2003;158:1213–1217.
12. Flavonoid and Proanthocyanidin Provisional Table. University of Minnesota Nutrition Coordinating Center, University of Minnesota: Minneapolis, MN; 2018.
13. Willett WC, Stampfer MJ. Total energy intake: implications for epidemiologic analyses. *Am J Epidemiol* 1986;124:17–27.
14. Buchman AS, Boyle PA, Wilson RS, Beck TL, Kelly JF, Bennett DA. Apolipoprotein E e4 allele is associated with more rapid motor decline in older persons. *Alzheimer Dis Assoc Disord* 2009;23:63–69.
15. Wilson RS, Barnes LL, Krueger KR, Hoganson G, Bienias JL, Bennett DA. Early and late life cognitive activity and cognitive systems in old age. *J Int Neuropsychol Soc* 2005;11:400–407.
16. Buchman AS, Boyle PA, Wilson RS, Bienias JL, Bennett DA. Physical activity and motor decline in older persons. *Muscle Nerve* 2007;35:354–362.
17. Kohout FJ, Berkman LF, Evans DA, Cornoni-Huntley J. Two shorter forms of the CES-D depression symptoms index. *J Aging Health* 1993;5:179–193.
18. Bennett DA. Secular trends in stroke incidence and survival, and the occurrence of dementia. *Stroke* 2006;37:1144–1145.
19. Morris MC, Wang Y, Barnes LL, Bennett DA, Dawson-Hughes B, Booth SL. Nutrients and bioactives in green leafy vegetables and cognitive decline: prospective study. *Neurology* 2017;90:e214–e222.
20. Devore EE, Kang JH, Breteler MMB, Grodstein F. Dietary intakes of berries and flavonoids in relation to cognitive decline. *Ann Neurol* 2012;72:135–143.
21. Letenneur L, Proust-Lima C, Le Gouge A, Dartigues JF, Barberger-Gateau P. Flavonoid intake and cognitive decline over a 10-year period. *Am J Epidemiol* 2007;165: 1364–1371.
22. Morris MC, Tangney CC, Wang Y, Sacks FM, Bennett DA, Aggarwal NT. MIND diet associated with reduced incidence of Alzheimer's disease. *Alzheimer Dement* 2015; 11:1007–1014.
23. Morris MC, Tangney CC, Wang Y, et al. MIND diet slows cognitive decline with aging. *Alzheimer Dement* 2015;11:1015–1022.
24. Liang J, Kerstin Lindemeyer A, Shen Y, et al. Dihydromyricetin ameliorates behavioral deficits and reverses neuropathology of transgenic mouse models of Alzheimer's disease. *Neurochem Res* 2014;39:1171–1181.
25. Kim JH, Lee J, Lee S, Cho EJ. Quercetin and quercetin-3-b-D-glucoside improve cognitive and memory function in Alzheimer's disease mouse. *Appl Biol Chem* 2016; 59:721–728.
26. Jaeger BN, Parylak SL, Gage FH. Mechanisms of dietary flavonoid action in neuronal function and neuroinflammation. *Mol Aspects Med* 2018;61:50–62.
27. Youdim KA, Dobbie MS, Kuhnle G, Proteggente AR, Abbott NJ, Rice-Evans C. Interaction between flavonoids and the blood-brain barrier: in vitro studies. *J Neurochem* 2003;85:180–192.

Neurology®

Dietary flavonols and risk of Alzheimer dementia
Thomas M. Holland, Puja Agarwal, Yamin Wang, et al.
Neurology published online January 29, 2020
DOI 10.1212/WNL.0000000000008981

This information is current as of January 29, 2020

Updated Information & Services	including high resolution figures, can be found at: http://n.neurology.org/content/early/2020/01/29/WNL.0000000000008981.full
Subspecialty Collections	This article, along with others on similar topics, appears in the following collection(s): Alzheimer's disease http://n.neurology.org/cgi/collection/alzheimers_disease Cohort studies http://n.neurology.org/cgi/collection/cohort_studies Nutritional http://n.neurology.org/cgi/collection/nutritional Public health http://n.neurology.org/cgi/collection/public_health
Permissions & Licensing	Information about reproducing this article in parts (figures, tables) or in its entirety can be found online at: http://www.neurology.org/about/about_the_journal#permissions
Reprints	Information about ordering reprints can be found online: http://n.neurology.org/subscribers/advertise

Neurology® is the official journal of the American Academy of Neurology. Published continuously since 1951, it is now a weekly with 48 issues per year. Copyright © 2020 American Academy of Neurology. All rights reserved. Print ISSN: 0028-3878. Online ISSN: 1526-632X.

